

CITY OF KELOWNA

BYLAW NO. 9393

Text Amendment No. TA04-0013 – Al Stober Construction Ltd. & T 186 Enterprises Ltd. (Al Stober Construction Ltd.) Amendments to CD14 – Comprehensive High Tech Business Campus Zone

A bylaw to amend the "City of Kelowna Zoning Bylaw No. 8000".

The Municipal Council of the City of Kelowna, in open meeting assembled, enacts that City of Kelowna Zoning Bylaw No. 8000 be amended as follows:

1. THAT Map A and Map B in **Schedule 'B' – Comprehensive Development Zones, CD14 – Comprehensive High Tech Business Campus** be deleted and replaced with "Map A" and "Map B" attached to and forming part of this bylaw;
2. This bylaw shall come into full force and effect and is binding on all persons as and from the date of adoption.

Read a first time by the Municipal Council this day of , 2005.

Considered at a Public Hearing on the day of , 2005.

Read a second and third time by the Municipal Council this day of , 2005.

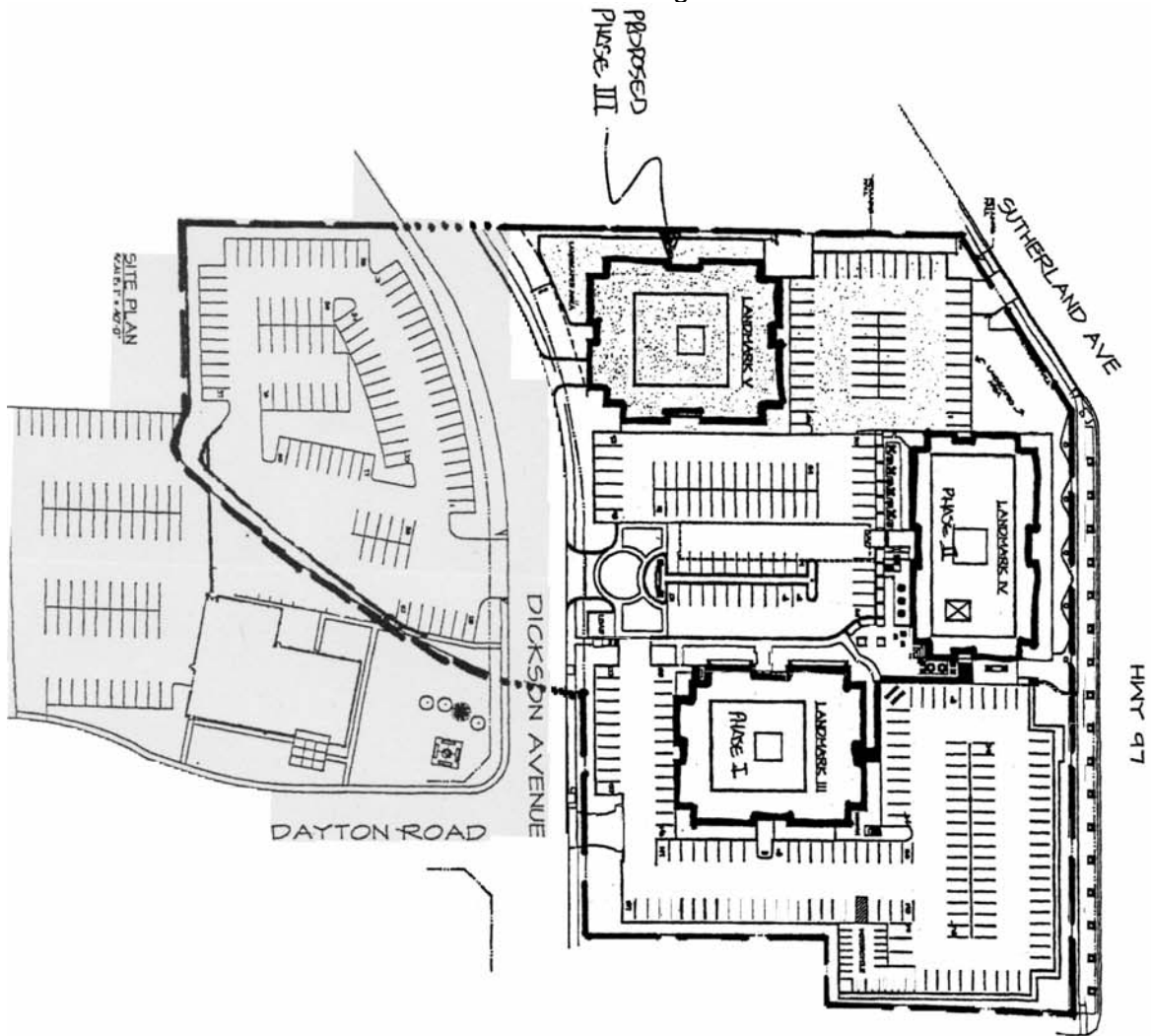
Approved under The Highways Act this day of , 2005.

(Approving Officer - Ministry of Transportation)

Adopted by the Municipal Council of the City of Kelowna this day of , 2005.

Mayor

City Clerk



ZONING DATA

Use - Local Business Avenue
 Use - Suburban Office Use (B-1.5)

PHASE I

2.5 SPACES / 1000 SQ. FT.
 1.5 SPACES / 1000 SQ. FT.
 1.5 SPACES / 1000 SQ. FT.

PHASE II

2.5 SPACES / 1000 SQ. FT.
 1.5 SPACES / 1000 SQ. FT.
 1.5 SPACES / 1000 SQ. FT.

PHASE III

2.5 SPACES / 1000 SQ. FT.
 1.5 SPACES / 1000 SQ. FT.
 1.5 SPACES / 1000 SQ. FT.

PHASE IV

2.5 SPACES / 1000 SQ. FT.
 1.5 SPACES / 1000 SQ. FT.
 1.5 SPACES / 1000 SQ. FT.

PHASE V

2.5 SPACES / 1000 SQ. FT.
 1.5 SPACES / 1000 SQ. FT.
 1.5 SPACES / 1000 SQ. FT.

PHASE VI

2.5 SPACES / 1000 SQ. FT.
 1.5 SPACES / 1000 SQ. FT.
 1.5 SPACES / 1000 SQ. FT.

PHASE VII

2.5 SPACES / 1000 SQ. FT.
 1.5 SPACES / 1000 SQ. FT.
 1.5 SPACES / 1000 SQ. FT.

PHASE VIII

2.5 SPACES / 1000 SQ. FT.
 1.5 SPACES / 1000 SQ. FT.
 1.5 SPACES / 1000 SQ. FT.

PHASE IX

2.5 SPACES / 1000 SQ. FT.
 1.5 SPACES / 1000 SQ. FT.
 1.5 SPACES / 1000 SQ. FT.

PHASE X

2.5 SPACES / 1000 SQ. FT.
 1.5 SPACES / 1000 SQ. FT.
 1.5 SPACES / 1000 SQ. FT.

PHASE XI

2.5 SPACES / 1000 SQ. FT.
 1.5 SPACES / 1000 SQ. FT.
 1.5 SPACES / 1000 SQ. FT.

PHASE XII

2.5 SPACES / 1000 SQ. FT.
 1.5 SPACES / 1000 SQ. FT.
 1.5 SPACES / 1000 SQ. FT.

PHASE XIII

2.5 SPACES / 1000 SQ. FT.
 1.5 SPACES / 1000 SQ. FT.
 1.5 SPACES / 1000 SQ. FT.

PHASE XIV

2.5 SPACES / 1000 SQ. FT.
 1.5 SPACES / 1000 SQ. FT.
 1.5 SPACES / 1000 SQ. FT.

PHASE XV

2.5 SPACES / 1000 SQ. FT.
 1.5 SPACES / 1000 SQ. FT.
 1.5 SPACES / 1000 SQ. FT.

PHASE XVI

2.5 SPACES / 1000 SQ. FT.
 1.5 SPACES / 1000 SQ. FT.
 1.5 SPACES / 1000 SQ. FT.

PHASE XVII

2.5 SPACES / 1000 SQ. FT.
 1.5 SPACES / 1000 SQ. FT.
 1.5 SPACES / 1000 SQ. FT.

PHASE XVIII

2.5 SPACES / 1000 SQ. FT.
 1.5 SPACES / 1000 SQ. FT.
 1.5 SPACES / 1000 SQ. FT.

PHASE XIX

2.5 SPACES / 1000 SQ. FT.
 1.5 SPACES / 1000 SQ. FT.
 1.5 SPACES / 1000 SQ. FT.

PHASE XX

2.5 SPACES / 1000 SQ. FT.
 1.5 SPACES / 1000 SQ. FT.
 1.5 SPACES / 1000 SQ. FT.

PHASE XXI

2.5 SPACES / 1000 SQ. FT.
 1.5 SPACES / 1000 SQ. FT.
 1.5 SPACES / 1000 SQ. FT.

PHASE XXII

2.5 SPACES / 1000 SQ. FT.
 1.5 SPACES / 1000 SQ. FT.
 1.5 SPACES / 1000 SQ. FT.

PHASE XXIII

2.5 SPACES / 1000 SQ. FT.
 1.5 SPACES / 1000 SQ. FT.
 1.5 SPACES / 1000 SQ. FT.

PHASE XXIV

2.5 SPACES / 1000 SQ. FT.
 1.5 SPACES / 1000 SQ. FT.
 1.5 SPACES / 1000 SQ. FT.

PHASE XXV

2.5 SPACES / 1000 SQ. FT.
 1.5 SPACES / 1000 SQ. FT.
 1.5 SPACES / 1000 SQ. FT.

PHASE XXVI

2.5 SPACES / 1000 SQ. FT.
 1.5 SPACES / 1000 SQ. FT.
 1.5 SPACES / 1000 SQ. FT.

PHASE XXVII

2.5 SPACES / 1000 SQ. FT.
 1.5 SPACES / 1000 SQ. FT.
 1.5 SPACES / 1000 SQ. FT.

PHASE XXVIII

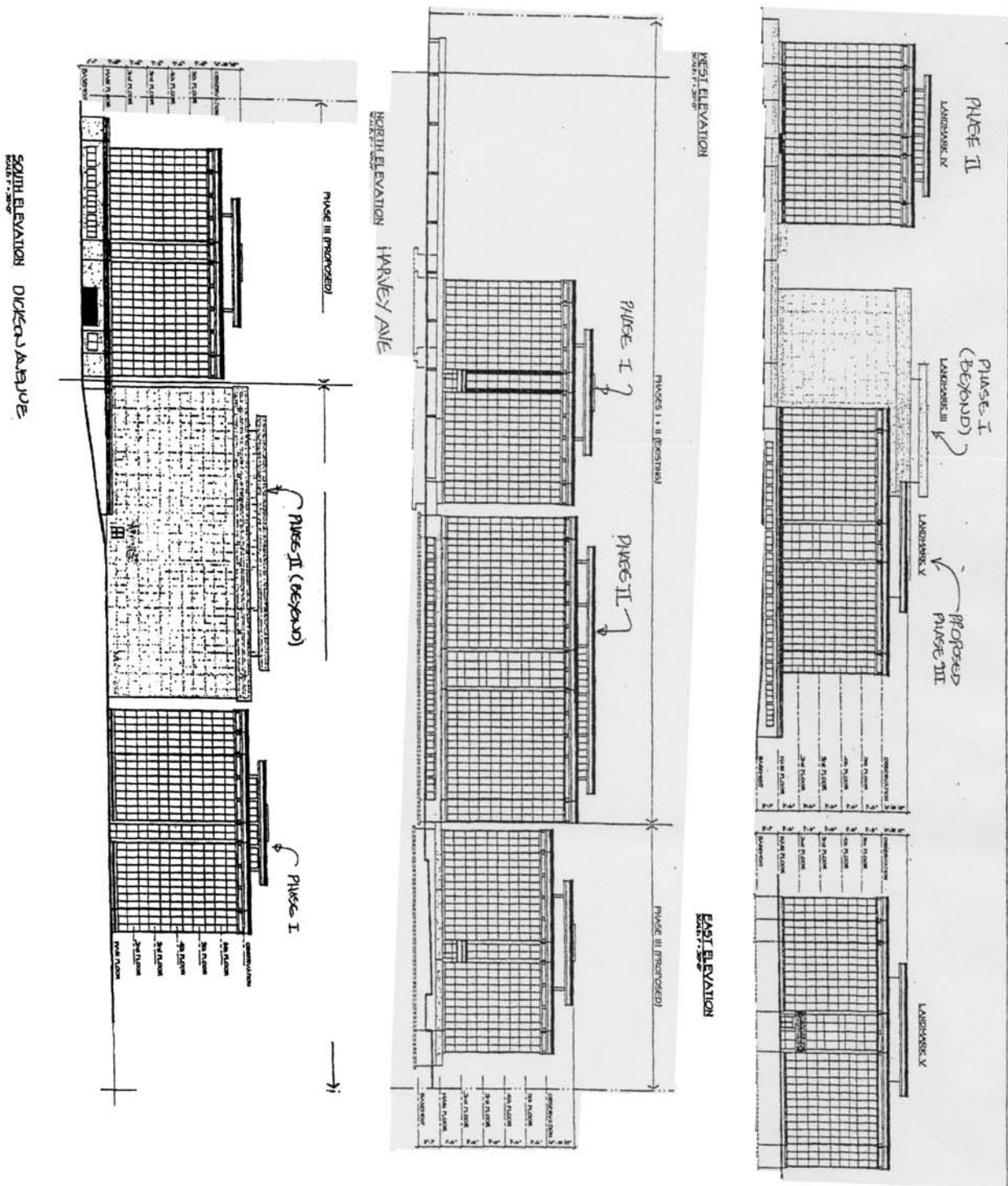
2.5 SPACES / 1000 SQ. FT.
 1.5 SPACES / 1000 SQ. FT.
 1.5 SPACES / 1000 SQ. FT.

PHASE XXIX

2.5 SPACES / 1000 SQ. FT.
 1.5 SPACES / 1000 SQ. FT.
 1.5 SPACES / 1000 SQ. FT.

PHASE XXX

2.5 SPACES / 1000 SQ. FT.
 1.5 SPACES / 1000 SQ. FT.
 1.5 SPACES / 1000 SQ. FT.



PHASE V
DECEMBER 14, 2004

(5)

Comprehensive High Tech Business Campus
Phase III

CD 14 - MAP B

CD 14 - MAP B